

Please Note: If you're new to Revit, you may be interested in my "[Beginner's Guide to Revit Architecture](#)" **84 part video tutorial training course**

. The course is 100% free with no catches or exclusions. You don't even need to sign-up. Just enjoy the course and drop me line if you found it useful. The [full course itinerary can be viewed here](#)

In this article we will take a look at Revit's **Decal** tool and how it can be used to apply a graphic image to the face of an element.

Decals are used to add realism to your rendered scenes. For example, you can add paintings and artwork to the walls of your interior scene. Or you can add images to the "screen" of a TV that you have modelled in Revit. The

Decal

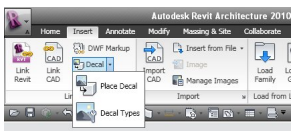
tools can be found on “

Insert

” menu, in the “

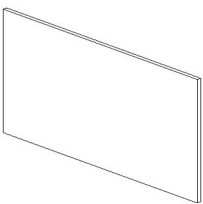
Link

” tab....



Let's work through a very simple step-by-step example in order to show you how this all works.

First of all let's create something to apply our decal to. A simple length of wall will do....

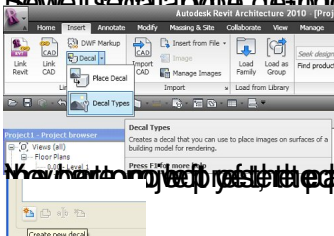


So let's say we want to portray a painting on this wall, when we render it. (Note: Decals only display properly when you render the scene. In any other graphic mode, they appear just as a place holder). Here is a lovely (in my opinion!) piece of art that I would like to hang on the wall, in my rendered scene.....

Decals: Applying images to Revit elements



Right-click on the image and select 'Decal Type' from the context menu. This will set up a

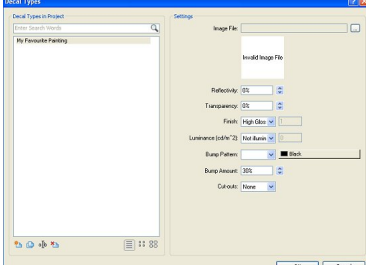


Now you can place the decal on the wall. Click on the 'Place Decal' button and select the wall you want to place the decal on.

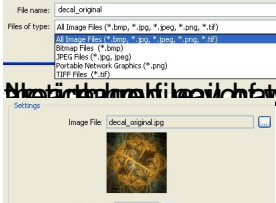
Go ahead and name your new decal....



Adjust the properties of the decal in the 'Decal Types' panel. Settings appear in the



With the 'Edit' button, you can change the image file. On the right side of the panel, you will



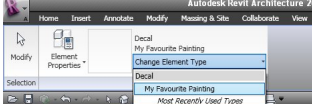
Now you can place the decal on the wall. Click on the 'Place Decal' button and select the wall you want to place the decal on.



Go ahead and place the decal on the wall. Click on the 'Place Decal' button and select the wall you want to place the decal on.



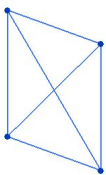
Now you can place the decal on the wall. Click on the 'Place Decal' button and select the wall you want to place the decal on.



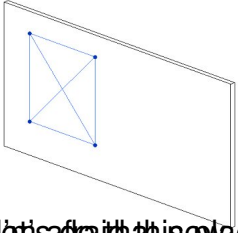
Now you can place the decal on the wall. Click on the 'Place Decal' button and select the wall you want to place the decal on.



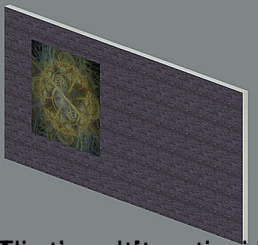
Now you can place the decal on the wall. Click on the 'Place Decal' button and select the wall you want to place the decal on.



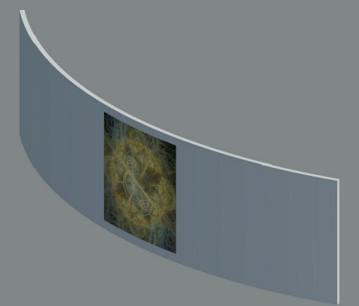
the wall. Dragged the corner of the decal so the image is of a more appropriate size, compared to



This face holder is all you are going to see until you come to render your scene. So



That's a bit more interesting. Our decal is being applied to a brick wall. One



This is a bit more interesting. Our decal is being applied to a curved surface. One