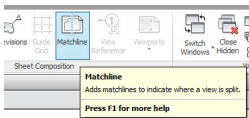


Please Note: If you're new to Revit, you may be interested in my "[Beginner's Guide to Revit Architecture](#)" **84 part video tutorial training course**

. The course is 100% free with no catches or exclusions. You don't even need to sign-up. Just enjoy the course and drop me line if you found it useful. The [full course itinerary can be viewed here](#)

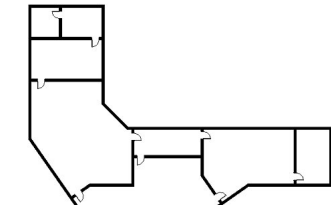
Welcome to the Revit Zone article on **Matchlines**. In this article we are going to take a look at what Matchlines are, within Revit. We are going to show you how to produce them and also when you would want to use them.



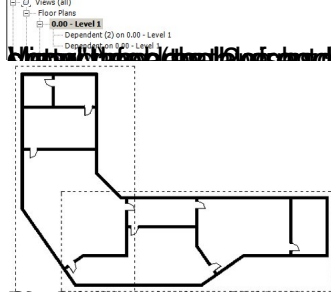
So what exactly are Matchlines? Matchlines are basically sketch lines that are used to show where a view is split. Matchlines are most commonly used in conjunction with "Dependent Views". If you are yet conversent with "Dependent Views" in Revit, you can find a couple of introductory articles [HERE](#) and [HERE](#) .

So let's just dive in with an actual example of a Matchline in use. This will probably be the best way to explain what they are and why you would use them. Let's start off by creating a large floor plan. Here is one.....

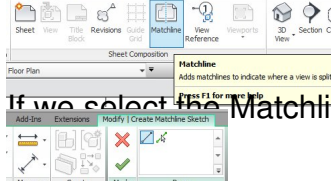
Matchlines



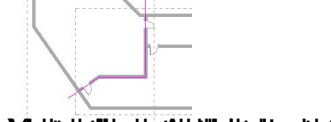
Revit Matchlines are used to indicate where a view is split. They are used to show that a view is not a full view of the object, but only a portion of it.



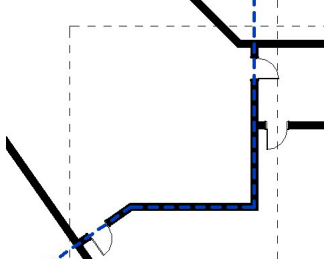
The Matchline tool is used to create matchlines. It is located in the Matchlines panel of the Architecture ribbon.



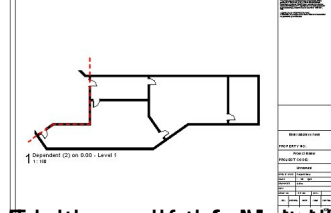
If we select the Matchline tool, Revit immediately enters the all-too familiar "Sketch Mode"....



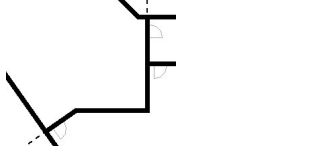
Matchlines are used to indicate where a view is split. They are used to show that a view is not a full view of the object, but only a portion of it.



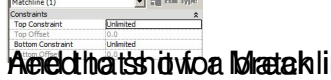
Matchlines are used to indicate where a view is split. They are used to show that a view is not a full view of the object, but only a portion of it.



Matchlines are used to indicate where a view is split. They are used to show that a view is not a full view of the object, but only a portion of it.



Matchlines are used to indicate where a view is split. They are used to show that a view is not a full view of the object, but only a portion of it.



Matchlines are used to indicate where a view is split. They are used to show that a view is not a full view of the object, but only a portion of it.