

**Please Note:** If you're new to Revit, you may be interested in my "[Beginner's Guide to Revit Architecture](#)" **84 part**

**video tutorial training course**

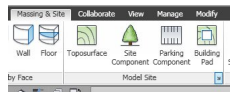
. The course is 100% free with no catches or exclusions. You don't even need to sign-up. Just enjoy the course and drop me line if you found it useful. The [full course itinerary can be viewed here](#)

When you take a **section** through a **Toposurface**, the default "**cut material**" that you see is "**Site- Earth**"  
"....



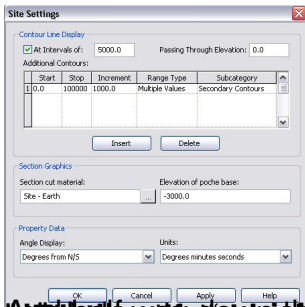
But what if you want to change this to something else? It is of course possible- but finding "*where*" to change the setting can sometimes prove frustrating to new users.

In order to find the parameter, you need to click on the little **arrow** at the base of the “**Model Site**” tab-  
located in the “**Massing & Site**” menu.....



NOTE: The arrow has a blue box around it, in the image above.

When you click on this arrow, you are presented with the “**Site Settings**” control panel.....



Another feature of the software is the 'Section Graphics' dialog box, which allows you to define the material used for the section cut. This dialog box has just two main controls: a dropdown menu for the material and a text field for the 'Elevation of poche base'. The 'Section Graphics' dialog box is shown in the screenshot below, with the material set to 'Site - Earth' and the 'Elevation of poche base' set to -3000.0.