

Please Note: If you're new to Revit, you may be interested in my "[Beginner's Guide to Revit Architecture](#)" **84 part video tutorial training course**

. The course is 100% free with no catches or exclusions. You don't even need to sign-up. Just enjoy the course and drop me line if you found it useful. The [full course itinerary can be viewed here](#)

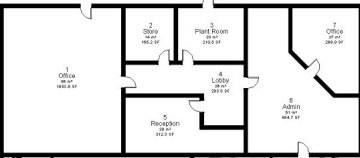
I'm going to start this article by saying that it feels a bit odd typing "Color" instead of "Colour", but despite me being physically located in the West Midlands (United Kingdom) Revit still insists on the American spelling of the word. Which is fine by me!

With that out of the way let's get started with **Color Schemes**. Have you ever needed to produce architectural plans for a presentation, where you need different rooms / spaces to be colour-coded? Well that's exactly what "

Color Schemes

" are for.

Color Schemes

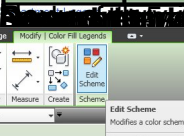
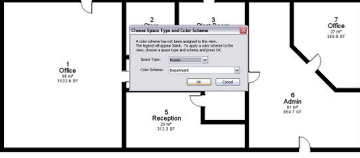
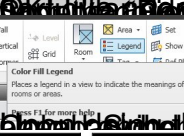


Identify Data

Number	1
Name	Office
Comments	
Occupancy	
Department	
Base Finish	
Ceiling Finish	
Wall Finish	
Floor Finish	
Occupant	

Room Schedule 2

Name	Department
Office	Office
Store	Storage
Plant Room	Plant
Lobby	Circulation
Reception	Office
Admin	Office
Office	Office
Office	Circulation
Office	Office
Office	Plant
Office	Storage



Edit Color Scheme

Value	Color	Fill Pattern	Preview	In Use
1	Light Green	SOLID		Yes
2	Blue	SOLID		Yes
3	Grey	SOLID		Yes
4	Light Green	SOLID		Yes

Table: Department Legend

Value	Area	Fill Pattern
1	Base Finish	Fill Pattern
2	Ceiling Finish	SOLID Fill
3	Floor Finish	SOLID Fill
4	Wall Finish	SOLID Fill
5	Storage	SOLID Fill



When you click on the 'Color Fill Legend' tool in the Revit software interface, it will open a dialog box where you can select the color fill for the rooms in your floor plan.

The 'Color Fill Legend' dialog box allows you to select the color fill for the rooms in your floor plan. You can also select the fill pattern for the rooms.

By clicking on the 'Color Fill Legend' tool, you can select the color fill for the rooms in your floor plan. This will allow you to create a color scheme for your floor plan.

When you click on the 'Color Fill Legend' tool, it will open a dialog box where you can select the color fill for the rooms in your floor plan. This will allow you to create a color scheme for your floor plan.

When you click on the 'Color Fill Legend' tool, it will open a dialog box where you can select the color fill for the rooms in your floor plan. This will allow you to create a color scheme for your floor plan.

When you click on the 'Color Fill Legend' tool, it will open a dialog box where you can select the color fill for the rooms in your floor plan. This will allow you to create a color scheme for your floor plan.

When you click on the 'Color Fill Legend' tool, it will open a dialog box where you can select the color fill for the rooms in your floor plan. This will allow you to create a color scheme for your floor plan.

When you click on the 'Color Fill Legend' tool, it will open a dialog box where you can select the color fill for the rooms in your floor plan. This will allow you to create a color scheme for your floor plan.

When you click on the 'Color Fill Legend' tool, it will open a dialog box where you can select the color fill for the rooms in your floor plan. This will allow you to create a color scheme for your floor plan.

When you click on the 'Color Fill Legend' tool, it will open a dialog box where you can select the color fill for the rooms in your floor plan. This will allow you to create a color scheme for your floor plan.



And that concludes our basic introduction to **Color Schemes** in Revit Architecture

And that concludes our basic introduction to **Color Schemes** in Revit Architecture