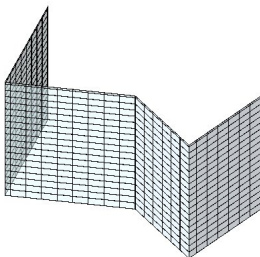


**Please Note:** If you're new to Revit, you may be interested in my "[Beginner's Guide to Revit Architecture](#)" **84 part video tutorial training course**

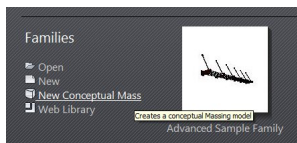
. The course is 100% free with no catches or exclusions. You don't even need to sign-up. Just enjoy the course and drop me line if you found it useful. The [full course itinerary can be viewed here](#)

In this article I am going to take you (step-by-step) through the process of using Revit Architecture's **Building Maker** tools to create a **Curtain System** directly from the **faces** of a **mass element**

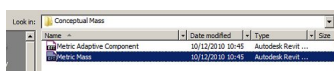
. If the term "**Building Maker**" means nothing to you, you may wish to [take a look at this article first](#) before proceeding.



OK, let's start right from the beginning by using the Conceptual Design Environment to create a new Conceptual Mass element. We do this right from Revit Architecture's launch screen.....

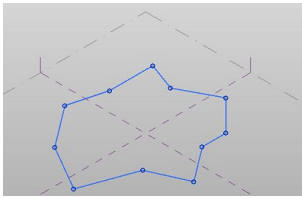


Just click on the “New Conceptual Mass” button, as seen in the image above. Revit will now ask you to choose a Family Template. I am going to choose “Metric Mass”. You may have a different choice of templates depending on the regional settings of your installation....

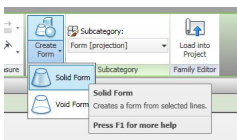


Upon selecting the file you are taken into Revit's Conceptual Design Environment, which is a specialised form of Family Editor. For the purposes of this exercise, I am going to create a simple extrusion. (If you have not yet learnt to create extrusions in the Conceptual Design Environment, [please take a look at this article before continuing](#) )

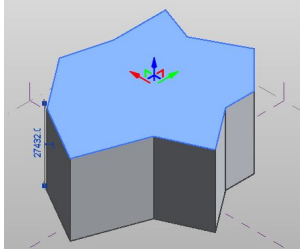
OK. So I've sketched out the profile for my extrusion.....



I can go ahead and choose “Create Form > Solid Form”.....

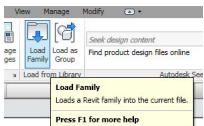


In order to create my Extrusion. And here's the finished Master Piece.....



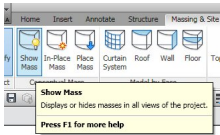
Wonderful. Now let's do something useful with it like generate a Curtain Wall System from its faces. In order to do this, we need to save this Conceptual Mass Family and then load it into a new Revit Project File. (This is because at present, we are still in the Conceptual Design Environment)

Right. I've saved my Mass family to the desktop and I've just created a new Project File. I now need to load the Mass Family into the Project. To do this I use the "Load Family" tool (found on the "Insert" menu)....

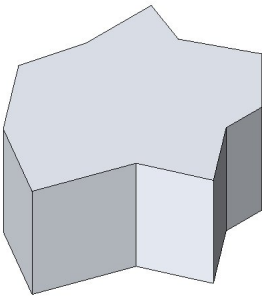


I select my Conceptual Mass family that I made previously and click OK. PLEASE NOTE:

Before you go any further, you will need to activate the “Show Mass” button or you will not be able to view your imported mass....

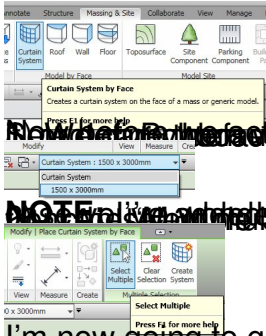


All I need to do now is place an instance of my Mass into the model environment. Just use the “Component” tool and place the mass on Level 1....



OK, we're already to go! Let's start turning this Concept into a real building! Switch to the “Massing and Site” menu and select “Curtain System” on the “Model by Face” tab....

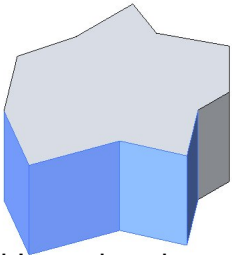
# Building Maker: Curtain System by Face



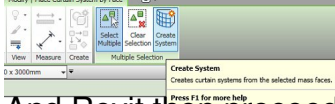
Now that we have the tool, let's create a Curtain System by Face. We'll use a simple model of a building with a few faces selected.

Now that we have the tool, let's create a Curtain System by Face. We'll use a simple model of a building with a few faces selected.

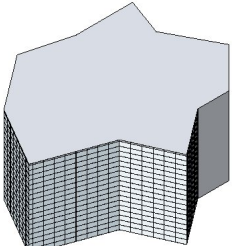
I'm now going to go ahead and select a few faces....



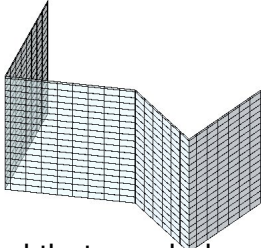
All I need to do now is hit "Create System" from the "Multiple Selection" Panel



And Revit then proceeds to create a Curtain System from all the faces selected...



And that's it! We've just created a Curtain System by Face. We can now use the 'Curtain System by Face' tool to create a Curtain System by Face on any other faces we want.



And that concludes our article on the Building Maker's "Curtain System by Face" tool.