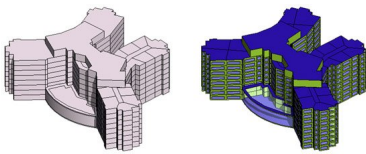


If you're an **Autodesk Subscription** customer, you've got a real treat coming very soon (next week I think)- in the form of a new **Subscription Advantage Pack**. This one will contain 2 new features:-

- **Revit Server**: A much better solution for Worksharing between different physical locations (ie over a Wide Area Network)
- **Conceptual Energy Analysis**: A built-in interface that talks to "Green Building Studio" in order to analyse your conceptual mass models



The excellent **AECBytes** website takes an in-depth look at both new features

[Read the entire article here](#)